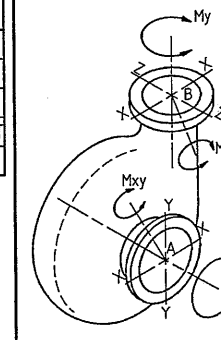


ITEM	QTY	DESCRIPTION	PART No.
1	1	WARMAN PUMP	AH215B-RCM-G2
2	1	DRIVE	SEE SPEC.
3	1	DRIVE GUARD	TB278-330E02
4	1	DRIVE KIT	TB260-160E02P-PT
5	1	MOTOR	SEE SPEC.



MAXIMUM CONCURRENT LOADS AND MOMENTS ON FLANGES	
FLANGE	LOAD
INTAKE FLANGE:	
Fz = Axial load along Z-Z axis into or out of the pump through A	2600 N
Fxy = Force in the X-Y plane. Any direction through A.	1300 N
Mz = About Z-Z axis through A. Torsional moment on flange.	95 Nm
Mxy = About any axis in X-Y plane through A.	190 Nm
DISCHARGE FLANGE:	
Fy = Axial load along Y-Y axis into or out of the pump through B	880 N
Fxz = Force in the X-Z plane. Any direction through B.	440 N
My = About Y-Y axis through B. Torsional moment on flange.	28 Nm
Mxz = About any axis in X-Z plane through B.	56 Nm

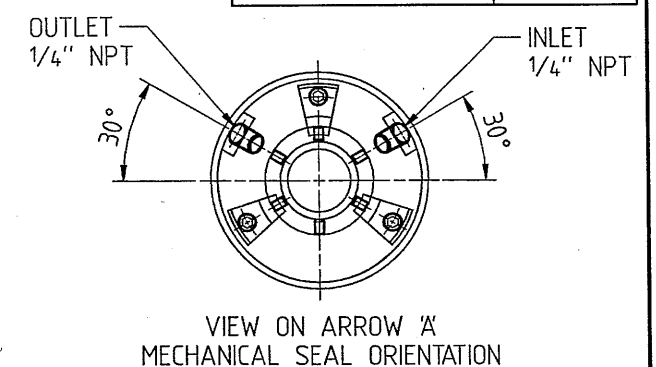
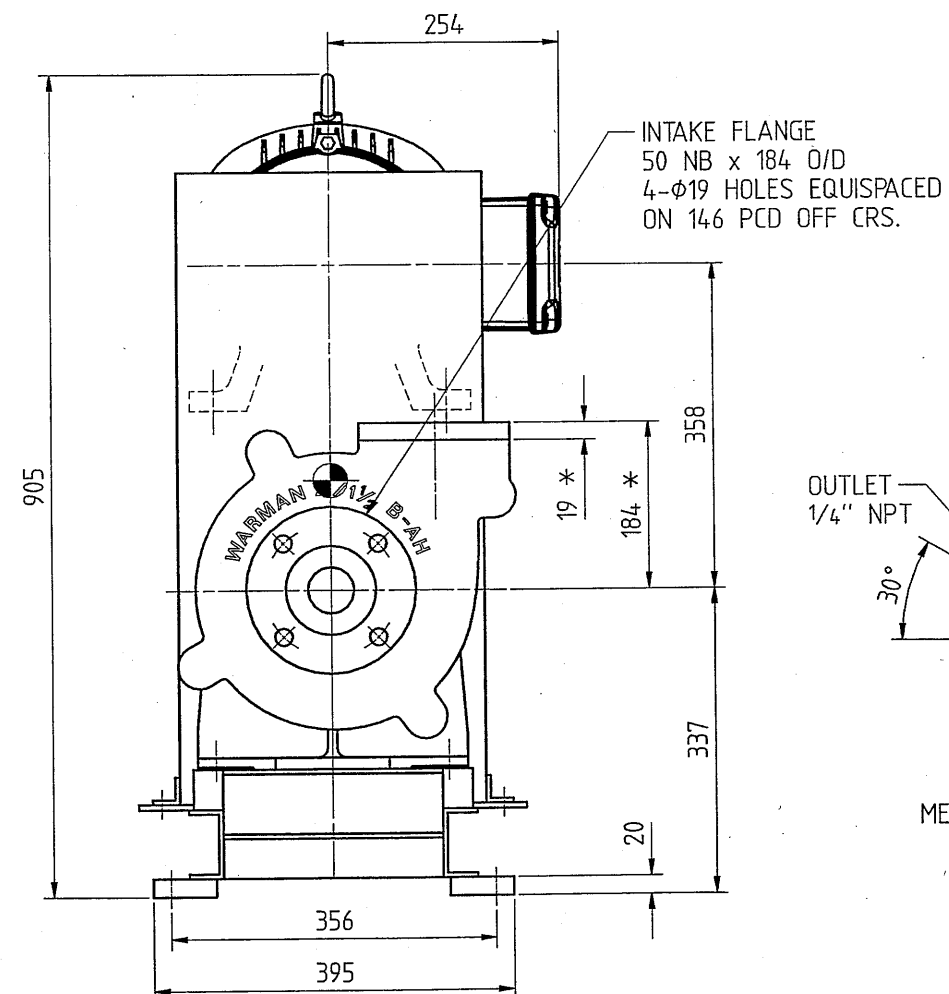
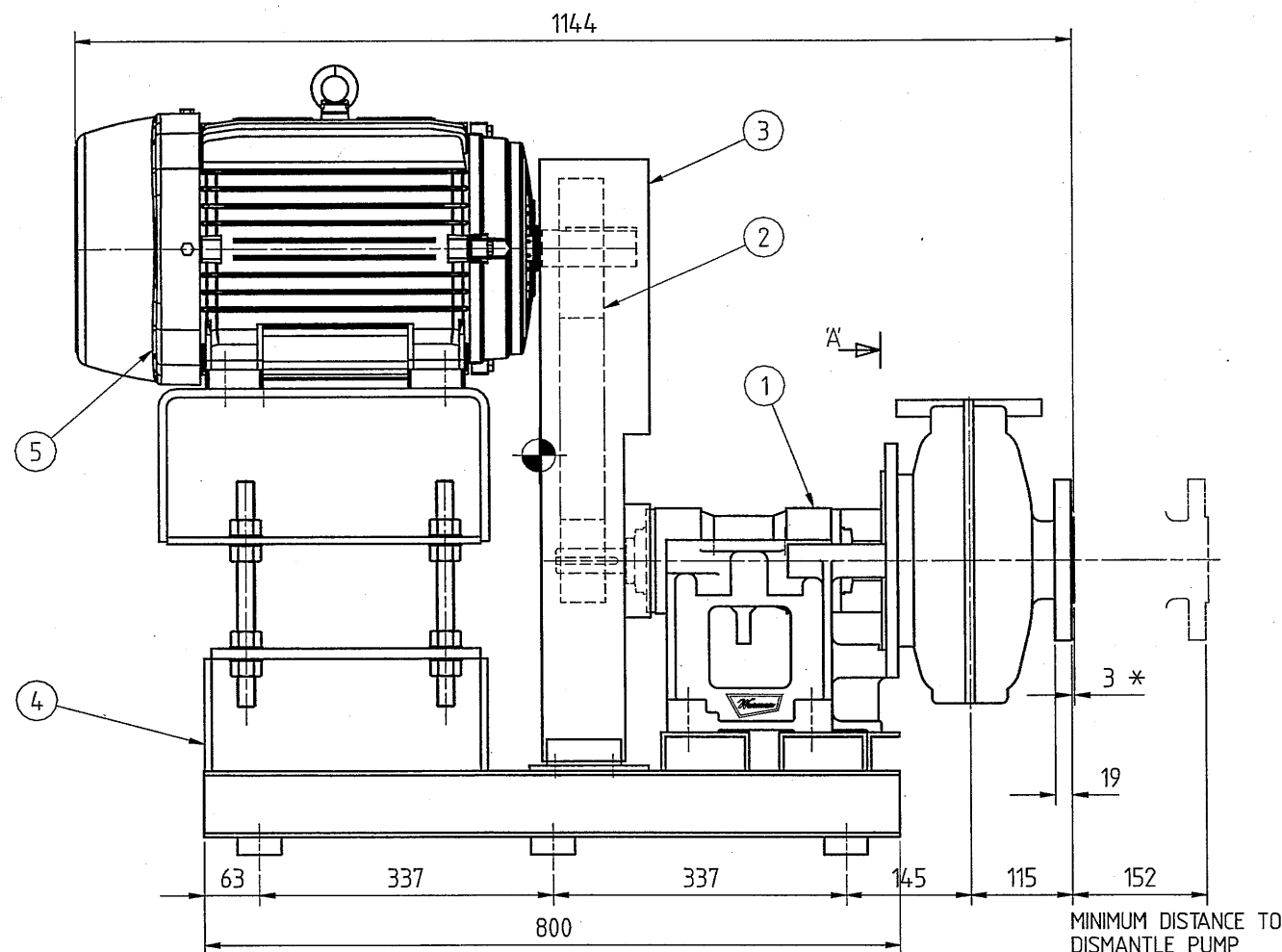
NOTE: DIMENSIONS SHOWN * INCLUDE
COMPRESSION OF RUBBER JOINT

ENCUMBRANCE :- 467 x 1145 x 905

LOADS in kg	
PUMP	80
MOTOR	121
BEDPLATE	77
DRIVE & GUARD	43
TOTAL (STATIC)	321
DYNAMIC LOADS ARE NEGLIGIBLE The effects of loads and moments applied to flanges are additional.	

DRIVE SPECIFICATION		
MOTOR PULLEY	PCD	160
	GROOVE	3 SPA
	BUSH	2517 x ϕ 42
PUMP PULLEY	PCD	95
	GROOVE	3 SPA
	BUSH	1610 x ϕ 28
BELTS	QXPA 1120 (3)	

MOTOR SPECIFICATION	
MANUFACTURER	WEG
FRAME	160L
kW	15
RPM	1460



WARMAN CONTRACT
199003 / 001
KKS Nos.
18HTK41AP001 - 18HTK42AP001
18HTK71AP001 - 18HTK72AP001

Copyright © Weir Minerals Europe Limited. 2011

Weir Minerals Europe Limited. ("the Company") is the owner of the copyright and all confidential information in this drawing.

The drawing must not be copied in whole or in part, in any form or by any means, and the information in it must not be disclosed to any person, or used for any purpose other than the specific purpose for which it has been provided, without the prior written consent of the Company.

5				
4				
3				
2				
1				
No.	DESCRIPTION	BY	DATE	CHK
REVISIONS				

PROJ.	I.WELLS
APP.	K.BRENNAN
CHECK	J.UMPLEBY
DRN.	MAY.18.2011
DATE	

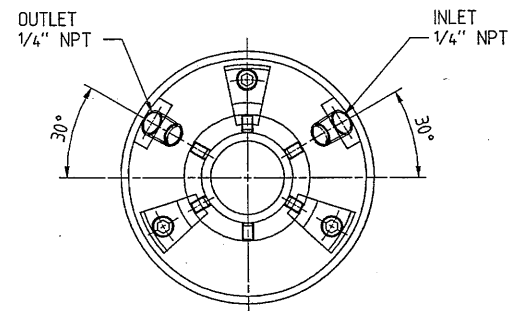
SCALE	
-------	--

PRODUCT :	WARMAN® Centrifugal Slurry Pumps
DESIGN CENTRE OF ORIGIN :	TODMORDEN. UK.

TITLE :
GENERAL ARRANGEMENT 2-1,5 B-AH.
ZV DRIVE. 160L MOTOR.




DRAWING No.	REV.
A2-110-8-801602	0
SHEET GB	



MECHANICAL SEAL ORIENTATION

WARMAN CONTRACT
199003 / 001
KKS Nos.
18HTK41AP001 - 18HTK42AP001
18HTK71AP001 - 18HTK72AP001

TITLE :		COMPONENTS DIAGRAM OF 2 1/1 2 B-AH RUBBER LINED WITH FLOWSERVE 50mm SLC MECHANICAL SEAL	
	DRAWING No.	AH215B-RCM-G2	REV.
		SHEET GB	0